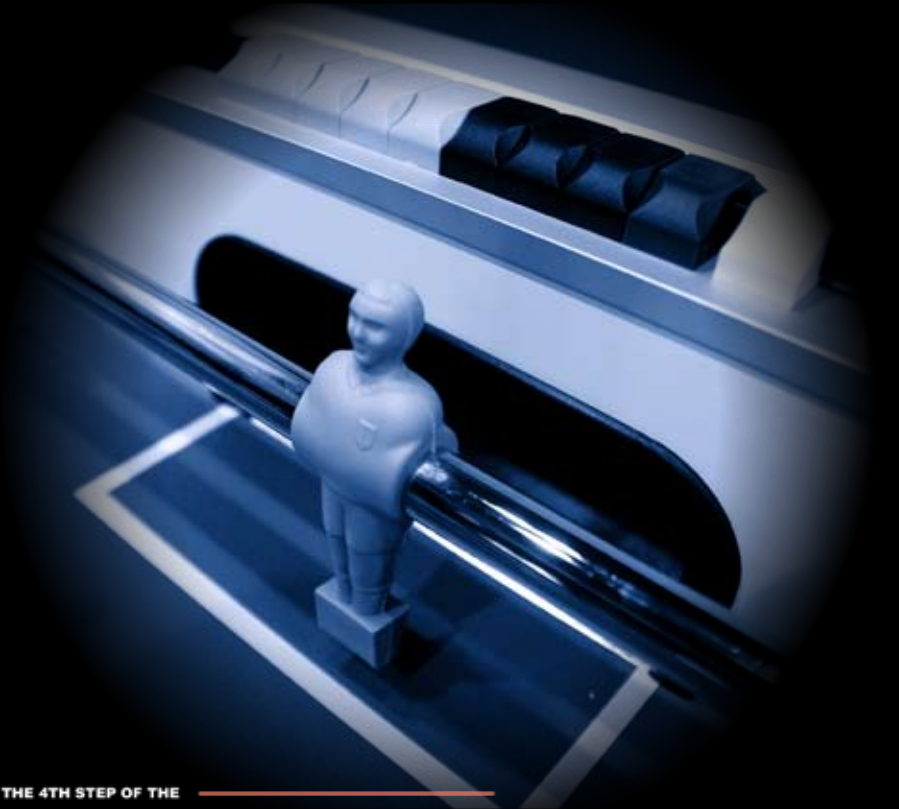


# INFORMATION

14 - 17 OCTOBER, 2010  
PRUHONICE - PRAGUE

information on [www.itsfworldtour.com](http://www.itsfworldtour.com)



THE CFO PRESENTS THE 4TH STEP OF THE

WORLD CHAMPIONSHIP SERIES

CZECH REPUBLIC 2010

TABLE-SOCCER

# WHAT'S NEW?

**WCS** An identical format for all WCS events  
In terms of schedule, information package, prizes, competition format ....



**A better redistribution of money**  
More players to recoup their costs via prize money and 100% of the money guaranteed by ITSF



**Final matches broadcast on TV**  
On Eurosport 2 (broadcasts in nearly 50 million homes)  
3 x 26' programs rebroadcast 3 times - total of 6 hours

**15** At least

**15 events guaranteed at each WCS event**

**www.** A new dedicated website  
For World Tour information and live results



**A handle change system**  
To help players adapt their game more easily on new tables

**ITSF**  
**World**  **Tour**

# TABLE OF CONTENT

## 01 INTRODUCTION

*p4 The World Championship Series events*

*p4 The Roberto Sport WCS event*

## 02 TOURNAMENT INFORMATION

*p5 Registration*

*p5 Licenses*

*p6 Rules and match format*

*p6 Top seeds*

*p6 Categories*

*p7 Package content*

*p7 Fees outside packages*

*p8 Prizes*

*p9 100% prize money guaranteed by the ITSF*

*p10 National Teams Competition*

*p11 Eurosport - broadcasting partner*

*p12 Kozoom - production partner*

*p13 Schedule*

*p16 Handle change system*

*p17 Partners*

*p18 How to get there*

## 03 CONTACT INFORMATION

*p19 ITSF*

[www.itsfworldtour.com](http://www.itsfworldtour.com)



## ČFO

Česká foosballová organizace

✉ : Prazska 16  
102 21 Prague 10  
Czech Republic

@ : [registrationwcs2010@foosball.cz](mailto:registrationwcs2010@foosball.cz)

🌐 : [www.foosball.cz](http://www.foosball.cz)



# 01 INTRODUCTION

## THE WORLD CHAMPIONSHIP SERIES EVENTS

There are 5 World Championship Series (WCS) events in the annual ITSF Tour, one on each ITSF Official table (Tornado, Tecball, Roberto Sport, Garlando, Bonzini).

Each of these events is a “mini World Championships event” on a single table, as opposed to the end-of-the-Tour World Championships which take place on all 5 tables.

The first 3 Open Singles winners of each WCS event, as well as the winners of the Women's Singles, Junior Singles and Senior Singles categories are automatically qualified for the World Championships.

These 6 players also benefit from a travel package to attend the World Championships (each package amounts to € 250 to € 800 depending on where they reside).

### 10 international titles are awarded at each WCS event:

01. Open Singles
02. Open Doubles
03. Junior Singles
04. Junior Doubles
05. Senior Singles
06. Senior Doubles
07. National Teams
08. Women's Singles
09. Women's Doubles
10. Disabled Doubles

## THE ROBERTO SPORT WCS EVENT

The Czech Table Soccer Federation (CFO) is proud to invite you to the 2010 ROBERTO SPORT WCS event which will take place for the first time at:

**Club Hotel Praha Pruhonice**  
**Pruhonice 400**  
**Praha - Pruhonice, CZECH REPUBLIC**

[www.club-hotel-praha.cz](http://www.club-hotel-praha.cz)

The main partners associated to this event are the Roberto Sport company, the City of Prague, the Eurosport 2 TV Channel and the Kozoom production company.

About 400 competitors from 15 countries and many spectators will attend this major event.

Apart from the main events, other competitions are also organized:

- **D.Y.P.** (Draw Your Partner)
- Singles events by rating categories : **Pro, Semi-Pro, Rookie**
- Doubles events by rating categories : **Pro, Semi-Pro, Rookie**

The Roberto Sport company will provide 80 tables for the competition.



## 02 TOURNAMENT INFORMATION

### REGISTRATION

**The competitions are strictly reserved to ITSF licensees.**

Players have to register **10 days at the latest before the event.**

All players will be able to check their registration on the ITSF website:  
[www.itsfworldtour.com](http://www.itsfworldtour.com)  
at least 10 days before the event.

The Pro, Semi Pro and Rookie Singles competitions are exclusively open to those players ranked in those categories.

For Doubles events: a player may take part in a competition in a higher category than his/her own if his/her partner is ranked in that category.

See next page for details on these 3 categories.

Players have to choose the registration sheets corresponding to their category and they must write down their license number on it.  
*(Otherwise the registration will be null and void and the registration payment will be sent back)*

Sport dress is compulsory for all players.  
National team players must wear their national outfit during the National Teams Competition and during ceremonies.



[www.table-soccer.org/rules/dresscode.php](http://www.table-soccer.org/rules/dresscode.php)

### LICENSES

Only those players registered in the ITSF database with the FAST software will be allowed to compete in ITSF events.

Players must have a player's license issued by their own federation – they can have one only. Please contact your federation for details.

Czech players have to be registered with the ČFO.

[www.foosball.cz](http://www.foosball.cz)

The deadline for registration is:

**MONDAY, OCTOBER 4th  
2010 INCLUDED**

*(the letter or e-mail must be  
postmarked by this date)*

*No registration will be taken into  
account after this date.*

### ČFO

Česká foosballová organizace

✉ : Prazska 16  
102 21 Prague 10  
Czech Republic

@ : [registrationwcs2010@foosball.cz](mailto:registrationwcs2010@foosball.cz)

🌐 : [www.foosball.cz](http://www.foosball.cz)

## RULES AND MATCH FORMAT

All events in the ITSF World Tour are played according to the international Game Rules, to be found in several languages on the ITSF website:

[www.table-soccer.org/rules](http://www.table-soccer.org/rules)

### Qualification

- All qualification matches are played in a single 7-point game.
- The FAST software takes into account the level of a player's opponents when determining qualification matches, in order for the automatic draw to be fair to all players.

### Elimination

- All matches of the elimination phase, except in the DYP events, are played with the following format : Single KO, best of 5 games, first to 5 in each game, with a 2-point difference in the last game up to a maximum of 8 points.
- DYP events : best of 3 games, with a 2-point difference in the last game up to a maximum of 8 points.

## TOP SEEDS

### Women's competitions

- If there are **more than 32 competitors**: there shall be 4 Top Seeds (TS) according to the ITSF World Ranking + 2 TS determined by the host federation (= wild cards). These 6 Top Seeds don't play qualification matches.
- If there are **32 competitors or less**: there shall be 4 Top Seeds (TS) according to the ITSF World Ranking. These TS play qualification matches but do not play against each other during that qualifying phase.

### Open competitions

- There shall be 8 Top Seeds (TS) according to the ITSF World Ranking + 4 Top Seeds determined by the host federation (= wild cards). These 12 Top Seeds don't play qualification matches.

[www.table-soccer.org/rankings](http://www.table-soccer.org/rankings)

- In the Doubles event, points from both partners are added for the seeding.

## CATEGORIES

### Specific conditions

- **Women and Senior players** (50 years old and older on December 31st, 2009) must choose between playing in their category (WS, WD, SS, SD) or playing in the Open events (OS, OD). Exceptionally, if there are very few competitors in their category (8 or less) players/teams will be allowed to compete in both events.

In that case, the competition in their category shall start 2 hours after the start of the elimination matches in the Open category and shall be played in Single KO. In case of time conflicts when launching matches, the Open event must be given priority. Also if there are 8 or less players/teams in that category (minimum 3), only 50 % of the prize money will be paid out to players.

- **Junior players** (under 18 years old on December 31st, 2009) can play both the Junior Singles and Open Singles (they take place on different days) but not the Singles per category competitions (Rookie, Pro and Semi Pro) nor the Mixed Doubles. Also, they have to choose between Junior Doubles and Open Doubles, except if there are 8 or less competitors in their category. In that case, if at least 1 team wants to play in the Open event, then the rule above is implemented (Junior Doubles in SKO, etc).

### Rating categories

- The ITSF has determined **3 rating categories**:

**Pro = ITSF Pro Players**

**Semi Pro = non Czech male players**

**Rookie = all remaining players**

- In any case, the Top 150 players in the **ITSF Combined Rankings** (Singles + Doubles) are considered Pro, and all international players are at least Semi-Pro. Female players can choose in which category they want to compete.

- 4 weeks before the start of the event, the final rankings to be used are displayed on the ITSF Tour website - changes that take place in the rankings after this date will not be taken into consideration. [List of Pro players](#) as posted on September 16th, 2010.

- For Doubles events: a player may take part in a competition in a higher category than his/her own if his/her partner is ranked in that category.

## PACKAGE CONTENT

### Pro, Semi-Pro and Rookie packages include:

- 1 Singles event\*
- 1 Doubles event\*\*
- Mixed Doubles
- 1 Singles event by rating category
- 1 Doubles event per rating category

(\* ) 1 Singles event = Open, Women's, Junior or Senior Singles

(\*\* ) 1 Doubles event = Open, Women's, Junior or Senior Doubles

### PACKAGE COST

(including tournament fee)

<b>Pro</b>	<b>140 €</b>
<b>Semi-Pro</b>	<b>120 €</b>
<b>Rookie</b>	<b>100 €</b>
<b>Women</b>	<b>100 €</b>
<b>Juniors</b>	<b>30 € (Pro 100 €)</b>
<b>Seniors</b>	<b>according to their category (P/SP/R)</b>
<b>Disabled</b>	<b>Free</b>

### Week-end Special!

If you start your first event on Saturday, the tournament fees are reduced to €15, which includes the € 5 euro referee fee.

## FEES OUTSIDE PACKAGES

### COST PER COMPETITION

<b>Pro</b>	<b>50 €</b>
<b>Semi-Pro</b>	<b>40 €</b>
<b>Rookie</b>	<b>30 €</b>
<b>Women</b>	<b>30 €</b>
<b>Juniors</b>	<b>0 € (Pro 30 €)</b>
<b>DYP</b>	<b>10 €</b>

**+ Tournament fee 30 €**

### 30 € TOURNAMENT FEE

This fee is included in the packages. In the case of fees outside packages, the tournament fee is added only once.

The tournament fee includes the following:

**Registration fee: 25 €**

**Referee fee: 5 €**

The tournament organizers use the referee fee to pay the referees who officiate during their event.

Referees receive between € 2 and € 5 per game depending on their level and for elimination matches only.

**DOWNLOAD  
YOUR  
REGISTRATION  
SHEETS FROM THE  
ITSF WORLD  
TOUR WEBSITE**

### Why pay a referee fee?

The referee fee is meant to motivate players to become referees. Tournament organizers use this money to pay referees who officiate during their event.

For more information, visit the ITSF website:

[www.table-soccer.org/rules](http://www.table-soccer.org/rules)

This fee does not guarantee players that they will have a referee at all times; it is mathematically impossible to have enough referees in the first rounds of a competition since most referees are also players. If no referee is available, the match must go on or else players/teams will be sanctioned (they may both get disqualified) for delaying the competition. However, it is clearly stated in the Referee Code that when a certified ITSF referee registers to play in a tournament, he/she is under the obligation to officiate (except in specific cases).

All referees have to wear ITSF referee shirts displaying their referee level. See referee dress code on: [www.table-soccer.org/rules/dresscode.php](http://www.table-soccer.org/rules/dresscode.php)

**Official Clinics for referees will be held at 9:00 pm on the first 3 days of the event.**

## PRIZES

\* WCh packages: these players are automatically qualified for the World Championships; they also benefit from a travel package to attend the WCh (each package amounts to € 250 to € 800 depending on where they reside).

## OPEN

+ ITSF medals for first 3

Singles		Doubles	
1	€ 1000 + WCh package*	1	€ 2000
2	€ 650 + WCh package*	2	€ 1400
3	€ 400 + WCh package*	3	€ 900
4	€ 300	4	€ 600
5/8	€ 200	5/8	€ 400
9/16	€ 125	9/16	€ 220
17/32	€ 80	17/32	€ 140

## WOMEN'S

- see conditions p.6

+ ITSF medals for first 3

Singles		Doubles	
1	€ 350 + WCh package*	1	€ 550
2	€ 250	2	€ 350
3	€ 150	3	€ 220
4	€ 150	4	€ 220
5/8	€ 100	5/8	€ 150

## SENIOR

- see conditions p.6

+ ITSF medals for first 3

Singles		Doubles	
1	€ 200 + WCh package*	1	€ 300
2	€ 150	2	€ 200
3	€ 70	3	€ 100
4	€ 70	4	€ 100

## DISABLED DOUBLES / JUNIOR

- see conditions p.6

+ ITSF medals for first 3

Singles		Doubles	
1	Trophy + Wch package*	1	Trophy
2	Trophy	2	Trophy
3	Trophy	3	Trophy

## MIXED DOUBLES

1	€ 300
2	€ 200
3	€ 150
4	€ 150
5/8	€ 70

## Daily DYP x3 days

1	€ 200
2	€ 150
3	€ 70
4	€ 70

## PRO

Singles		Doubles	
1	€ 300	1	€ 550
2	€ 200	2	€ 350
3	€ 125	3	€ 200
4	€ 125	4	€ 200
5/8	€ 75	5/8	€ 80

## SEMI-PRO

Singles		Doubles	
1	€ 200	1	€ 350
2	€ 125	2	€ 200
3	€ 75	3	€ 120
4	€ 75	4	€ 120
5/8	€ 50	5/8	€ 60

## ROOKIE

Singles		Doubles	
1	€ 125	1	€ 200
2	€ 75	2	€ 150
3	€ 50	3	€ 80
4	€ 50	4	€ 80



**100% PRIZE MONEY GUARANTEED BY THE ITSF**

REGISTRATION FEE (packages)		TOURNAMENT FEE INCLUDED*	REGISTRATION FEE (outside package)	
<b>Pro</b>	€ 140	€ 30	<b>Pro</b>	€ 50
<b>Semi-pro</b>	€ 120	€ 30	<b>Semi-pro</b>	€ 40
<b>Rookie</b>	€ 100	€ 30	<b>Rookie</b>	€ 30
<b>Junior</b>	€ 30 - pro: €100	€ 30	<b>Women</b>	€ 30
<b>Senior</b>	as ranked	€ 30	<b>+ Tournament fee</b>	€ 30
<b>Women</b>	€ 100	€ 30		
<b>Disabled</b>	Free	Free		
			<b>DAILY DYP</b>	
			€ 10	

\*This € 30 tournament fee includes the € 5 euro referee fee.

➔ 3 rating categories: Pro, Semi Pro and Rookie - see page 6

**TOTAL € 34 595 (\$ 42 685)**

<b>Cash</b>	€ 28 095
<b>Trophies</b>	€ 2 500
<b>WCh travel</b>	€ 3 000
<b>ITSF medals</b>	€ 1 000

➔ Specific conditions for Women, Seniors and Juniors - see page 6

➔ **Week-end Special:** if you start your first event on Saturday, the tournament fees are reduced to €15, which includes the € 5 euro referee fee.

➔ The € 34 595 total amount (including € 28 095 cash) is guaranteed by the ITSF for each WCS event.



## NATIONAL TEAMS COMPETITION (NTC)

### What's new in 2010

#### ➤ Separate events for men and women (min. 3 teams in each competition)

- Women's event: 4 players + 2 reserve / Minimum 3 players
- Men's event: 7 players + 2 reserve / Minimum 4 players

#### ➤ Competition format

- Men's - 5 matches: S-D-S-D-S (S = Singles ; D = Doubles)
- Women's - 3 matches: S-D-S

All matches are played in a single 7-point game with a 2-point difference up to a maximum of 10 points.

**Players can only play one match**, so there must always be 7 different names on each scoresheet in the Men's event and 4 in the Women's event.

See scoresheets: [Men's](#) [Women's](#)

#### ➤ New at the Roberto Sport WCS event: in the qualification phase, each national team meets 3 other teams at random (draw managed by FAST).

8 teams qualify for next round (4 in the Women's event)

Only 4 Top Seeds: the host country and the 3 best ranked nations in the ITSF

[Men's rankings of nations](#) and [Women's rankings of nations](#)

Top Seeds play in qualifiers but don't meet each other.

#### ➤ Specific cases

- If there are 6 players in a Men's team (3 in a Women's team), that team will forfeit the first Singles match to be played on the scoresheet;
- If there are 5 players in a Men's team, that team will forfeit the first Doubles match;
- If there are 4 players in a Men's team, that team will forfeit the first Singles and Doubles matches.
- When a 6-player team plays against a 5-player team, only the first Doubles match is forfeited - the first Singles match is played.
- When 2 teams of 6 players (or 2 teams of 5 players) play against each other, an extra Doubles match is played in case of a 2-2 tie. Players who will play this match must be announced at the time the whole team is registered at the players' station ; please inform the registration table and person in charge of this competition.

### NTC Schedule - Thursday, October 14th

#### ➤ 12:30 pm - Meeting with team captains

- FAST draw results and match schedule for each team
- Information on competition format and deadlines for entering rosters (**2:00 pm for the first encounter - no blank scoresheets handed out**)
- Captains must check number of players in opposing teams to make up rosters

#### ➤ 5:00 pm - Presentation of the national teams at the Opening Ceremony.

#### ➤ 5:30 pm - Start of competitions - all matches (3 or 5) take place at the same time - each encounter takes about half an hour

Team captains enter the names of their team players **15 minutes at the latest before the start of the next encounter**. There will be no call and no reminder to team captains regarding this. If the team captains fail to do so, **FAST will automatically register the roster of the last played encounter**.

#### ➤ 7:00 pm - End of qualification phase

Team captains must enter their team rosters for the elimination matches **15 minutes at the latest after they know who their next opponent is**. There will be no call and no reminder to team captains regarding this. If the team captains fail to do so, **FAST will automatically register the roster of the last played encounter**.

#### ➤ 7:15 pm (at the latest) - Start of elimination

Women's semi-final: matches take place one at a time  
Men's quarter final: the first 2 matches take place at the same time, then one at a time.

#### ➤ 8:00 pm : Women's final (or Men's semi-final – whichever is ready to be played)

And 1 encounter every hour in order to have the Men's final at 11:00 pm.  
All matches take place one at a time, except for competitions for the 3rd place where all matches take place at the same time.

This competition will be broadcasted on Eurosport2.

Players who do not abide by the ITSF Dress Code will not be allowed to compete.

**EUROSPORT - BROADCASTING PARTNER**

A member of the TF1 group, the Eurosport 2 channel gathers the largest audiences of the cable (source: Sport Strategies), which makes it one of the major actors of sport in Europe and worldwide.

The Eurosport 2 channel broadcasts in nearly  
**50 million homes.**

ITSF benefits from a broadcasting partnership in the form of  
**26' highlight programs**  
recalling each step of the ITSF World Tour.

[www.eurosport.fr](http://www.eurosport.fr)

**6 hours of programs**  
dedicated to the 2010 WCS events

(including 3 rebroadcast of each program)

**BROADCAST IN 58 COUNTRIES****Asia and Pacific Countries**

1. Australia
2. Indonesia
3. Malaysia
4. Brunei
5. Hong Kong
6. Singapore
7. Fiji Islands
8. Maldiv Islands
9. Myanmar
10. Tonga Islands
11. Philippines
12. Sri Lanka

**11 LANGUAGES**

English  
French  
German  
Greek  
Hungarian  
Italian  
Polish  
Romanian  
Russian  
Serbian  
Turkish

**Western and Northern Europe**

1. Austria
2. Belgium
3. Denmark
4. Finland
5. France
6. Germany
7. Ireland
8. Iceland
9. Luxembourg
10. Netherlands
11. Norway
12. Sweden
13. Switzerland
14. United Kingdom

**Southern Europe and Mediterranean countries**

1. Cyprus
2. Spain
3. Greece
4. Italy
5. Lebanon
6. Malta
7. Portugal
8. Turkey

**Central and Eastern Europe and other countries**

1. Albania
2. Armenia
3. Azerbaijan
4. Belarus
5. Bosnia-Herzegovina
6. Bulgaria
7. Croatia
8. Czech Republic
9. Estonia
10. Georgia
11. Hungary
12. Kazakhstan
13. Latvia
14. Lithuania
15. Macedonia
16. Moldavia
17. Montenegro
18. Poland
19. Romania
20. Russia
21. Serbia
22. Slovakia
23. Slovenia
24. Ukraine

**KOZOOM - PRODUCTION PARTNER**

Kozoom is a multimedia broadcasting and production company which specializes in table sports. With its 10 years of experience, this company, based in France, became well known by filming billiard tournaments throughout the world.

In April 2008, **Kozoom was the first company to record a billiard tournament - the Artistic Billiard World Championships - in high definition.**

In 2009 and 2010, Kozoom filmed the ITSF Table Soccer World Cup as well as various WCS events; the programs they produced were then broadcast on the Eurosport 2 TV channel.

[www.kozoomcorp.com](http://www.kozoomcorp.com)



**THURSDAY 14**

Competition	Qualification start	Seeded players	Nb of Q matches	Qualified players	Elimination start	Elimination format	Break	Finals (estimate)
Doubles events by rating categories (Pro; SemiPro; Rookie)	9:30 AM	-	6*	80%**	12:00 PM	SKO - 3/5	5:00 PM	4:00 PM****
DYP for eliminated players	-	-	-	-	4:00 PM	SKO - 2/3	5:00 PM	9:00 PM
5:00 PM - Opening Ceremony (stop calling matches at 4:00 PM)								
National Teams Competition	-	Top 8	-	-	7:15 PM	SKO	-	11:00 PM

**FRIDAY 15**

Competition	Qualification start	Seeded players	Nb of Q matches	Qualified players	Elimination start	Elimination format	Break	Finals (estimate)
Open Singles	9:30 AM	12	8*	80%**	2:00 PM	SKO - 3/5	6:00 PM	10:00 PM
Women's Singles	9:30 AM	See p6	6*	100%***	2:00 PM	SKO - 3/5	6:00 PM	7:00 PM
Senior Singles	9:30 AM	-	6*	100%***	2:00 PM	SKO - 3/5	6:00 PM	5:00 PM
DYP for eliminated players	-	-	-	-	4:00 PM	SKO - 2/3	6:00 PM	9:00 PM
6:00 PM - Award Ceremony for Doubles events and National Teams Competition + Presentation of Singles' finalists on the stage (photos for all)								

**SATURDAY 16**

Competition	Qualification start	Seeded players	Nb of Q matches	Qualified players	Elimination start	Elimination format	Break	Finals (estimate)
Open Doubles	9:30 AM	12	8*	80%**	1:00 PM	SKO - 3/5	6:00 PM	10:00 PM
Women's Doubles	9:30 AM	See p6	6*	100%***	1:00 PM	SKO - 3/5	-	7:00 PM
Junior Doubles	9:30 AM	-	6*	100%***	1:00 PM	SKO - 3/5	-	6:00 PM
Senior Doubles	9:30 AM	-	6*	100%***	1:00 PM	SKO - 3/5	-	5:00 PM
Disabled Doubles	9:30 AM	-	6*	100%***	1:00 PM	SKO - 3/5	-	4:00 PM
DYP for eliminated players	-	-	-	-	4:00 PM	SKO - 2/3	6:00 PM	9:00 PM
6:00 PM - Award Ceremony for Singles events + Presentation of Doubles' finalists on the stage (photos for all)								

**SUNDAY 17**

Competition	Qualification start	Seeded players	Nb of Q matches	Qualified players	Elimination start	Elimination format	Break	Finals (estimate)
Singles events by categories	9:30 AM	-	6*	80%**	1:00 PM	SKO - 3/5	-	8:00 PM
Junior Singles	9:30 AM	-	6*	100%***	2:00 PM	SKO - 3/5	6:00 PM	6:00 PM
Mixed Doubles	9:00 AM	-	4	100%***	1:00 PM	SKO - 3/5	-	7:00 PM
Awards to be presented to winners at the end of each competition								

\*The number of qualification matches will depend on the number of players and tables, to make sure eliminations matches start on time.

\*\*80 % of qualified players BUT the maximum number can not be more than 4 times the number of AVAILABLE tables for the final phases.

\*\*\* In order for players to be qualified for the elimination phase, they have to have taken part in at least half of their matches in the qualification phase.

\*\*\*\*If finals can not be played at 4:00 pm, they will resume on Friday at 1:00 pm.

## SCHEDULE

## THURSDAY 14

## 🕒 9:30 am

Start of qualification phase for Doubles events by rating categories (Pro; SemiPro; Rookie)

## 🕒 12:00 pm

End of qualification and start of elimination – Single KO

## 🕒 12:30 pm

Meeting with team captains and FAST draw results for the National Teams Competition

## 🕒 2:00 pm

Deadline for entering names of team players for the first qualifier in the National Teams Competition

## 🕒 4:00 pm

Daily DYP for eliminated players – SKO  
End of registration 15 mn before start  
No national teams' players allowed in this DYP

## 🕒 4:00 pm

Last call for Doubles events by rating categories – matches that are not finished will resume on Day 2 at 1:00 pm

## 🕒 5:00 pm

Opening Ceremony: presentation of national teams

## 🕒 5:30 pm

Start of the National Teams Competition

## 🕒 9:00 pm

Official Clinic for referees

## FRIDAY 15

## 🕒 9:30 am

Qualification matches for Singles categories: Open, Women's and Senior (if there are enough competitors)

## 🕒 2:00 pm

Elimination matches – SKO

## 🕒 4:00 pm

Daily DYP for eliminated players – SKO  
End of registration 15 mn before start

## 🕒 6:00 pm

Award Ceremony for Doubles events by rating categories and National Teams Competition  
+ Presentation of the remaining players of the Open Singles competitions

## 🕒 7:00 pm

Elimination matches resume up to finals

## 🕒 9:00 pm

Official Clinic for referees

# SATURDAY 16

## 9:30 am

Start of qualification phase for all Doubles categories: Open, Women's, Junior, Senior and Disabled (if there are enough competitors):

## 1:00 pm

Elimination matches in Single KO

## 4:00 pm

Daily DYP for eliminated players – SKO  
End of registration 15 mn before start

## 6:00 pm

Award Ceremony for Singles events  
+ Presentation of the remaining players of the Doubles competitions

## 7:00 pm

Elimination matches resume up to finals

## 9:00 pm

Official Clinic for referees

# SUNDAY 17

## 9:00 am

Start of qualification phase for Mixed Doubles

## 9:30 am

Start of qualification phase for Singles events by rating categories (Pro; SemiPro; Rookie) and Junior Singles

## 1:00 pm

Start of elimination for Mixed Doubles and Singles events by rating categories – SKO

## 2:00 pm

Start of elimination for Junior Singles - SKO

Awards to be presented to winners at the end of each competition.

## TST - HANDLE CHANGE SYSTEM



At the 2010 and 2011 WCS events, the ITSF is implementing the use of the TST handle change system.

Visit the TST website at :

[www.tst-systems.com](http://www.tst-systems.com)

- In all these events, tables will be set up without handles, so that the TST Company can install its handle adaptors on all tables one day before the tournament start.
- Competitors will play exclusively with the handles and handle change system provided by the TST Company.
- Players who do not yet have their own handles will be able to rent some from the TST Company.

**Handles for rent:**

**2 euros per handle**



**PARTNERS**



[www.robortosport.it](http://www.robortosport.it)



ČESKÁ FOOSBALLOVÁ ORGANIZACE

[www.foosball.cz](http://www.foosball.cz)



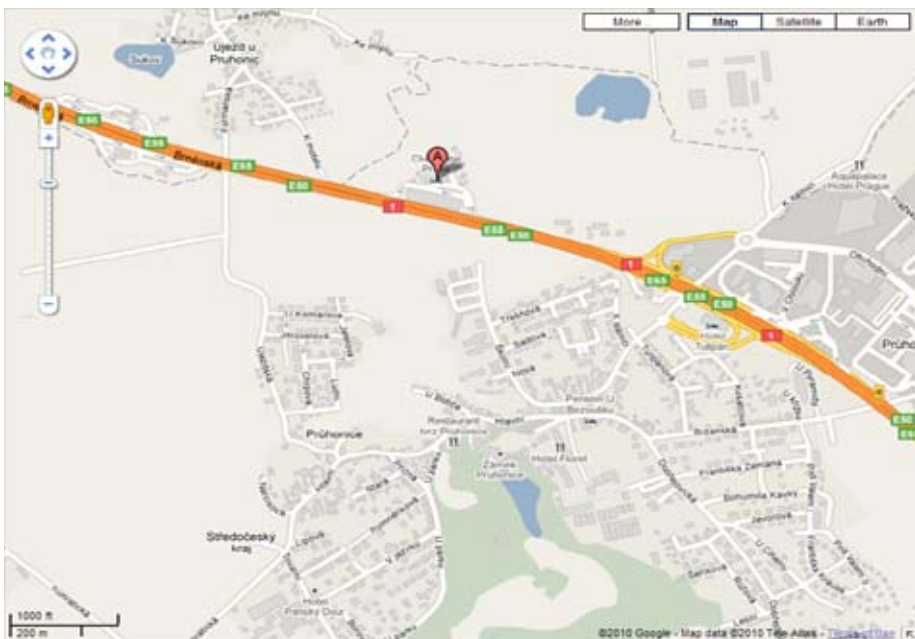
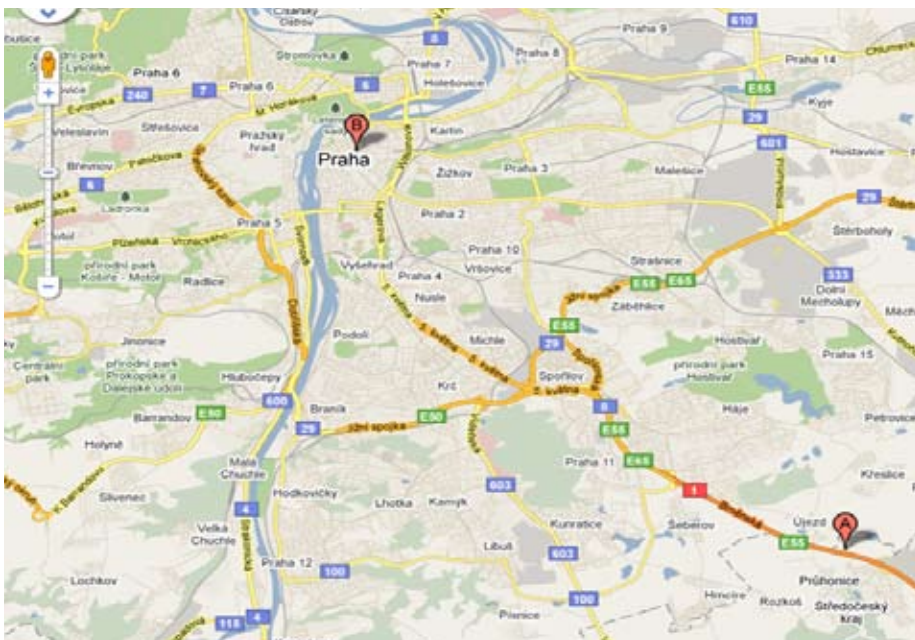
[www.kozoomcorp.com](http://www.kozoomcorp.com)



[www.prague.com](http://www.prague.com)



[www.eurosport.fr](http://www.eurosport.fr)



## FLIGHT

### Prague Airport Destinations

## TRAIN

### Hlavní Nadraží station (Prague main station)

## TOURIST OFFICE

☎ : +420 221 714 444  
Mon-Fri, 9-12 am / 1-4 pm  
[www.praguewelcome.cz/en](http://www.praguewelcome.cz/en)  
[tourinfo@pis.cz](mailto:tourinfo@pis.cz)

## PARKING

### Free parking spaces

### GPS Coordinates

## ADDRESS

Pruhonice 400  
Prague - Pruhonice  
CZECH REPUBLIC  
[www.club-hotel-praha.cz](http://www.club-hotel-praha.cz)

## HOW TO GET THERE

### From Prague's Airport

The best way to go the Club Hotel Praha is to take a taxi.

**Prague airport transfers** - Transport has to be booked in advance or upon arrival. This company has fixed prices. To book, call number 800 870 888 (free of charge in Prague). Average price from the airport to the hotel is 750,- CZK (approx. 30€)

**AAA Radiotaxi** - These taxis are parked at the airport; it is not necessary to pre-book. This company does not have fixed prices; average price from the airport to the hotel is 1100,- CZK (approx. 44€).

### By car

**From Brno to Prague** - Club Hotel Praha is situated on kilometer 6 on highway D1. Do **not** take the exit to the city of Pruhonice on Km 6. Pass this exit and take the separate one to the hotel.

**From Prague to Brno** - Take the exit to the city of Pruhonice on Km 6, pass under the highway in the opposite direction (to Prague) and take the separate exit to the hotel.

### By public transportation

Take bus 119 to *Dejvická* metro station (Line A), then take the metro to *Muzeum* station. Switch to Line C, go to *Opatov* station and take bus 363 to *Pruhonice* station. The hotel is a few minutes' walk from the station.



## Contact us

+33 (0)2 40 47 90 84

✉ : **International Table Soccer Federation**  
27 rue Adolphe Moitié  
44000 Nantes  
FRANCE

*(from Monday to Friday 9:00 am - 12:00 pm – 1:30 pm - 4:30 pm)*

☎: +33 (0)2 40 47 90 84

📠: +33 (0)2 40 20 44 59

@: [info@table-soccer.org](mailto:info@table-soccer.org)

💻: [www.table-soccer.org](http://www.table-soccer.org)

💻: [www.itsfworldtour.com](http://www.itsfworldtour.com)

